

Fork Mounted Bucket

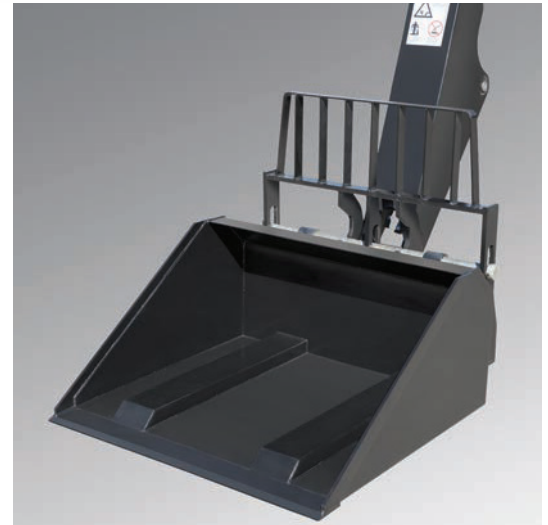
The fork mounted bucket provides the versatility of a bucket with the convenience of not needing to remove forks and carriages.

Features

- Cost effective alternative to a coupler mounted bucket
- For use with approved JLG telehandlers

Specifications

- Maximum capacity: 2000 lbs
- Maximum weight: 705 lbs
- 60" bucket
- Bucket width: 1 cu. yd.
- 48" forks
- Distance to center of gravity: 22.5 in.



Current Production - Fork Mounted Bucket

Available Through JLG Aftermarket Or With New Machine Orders

BUCKET WIDTH		60"	
CAPACITY		2000 lbs.	
APPROX. WEIGHT		705 lbs.	
PART NO.		1001195970	
MODEL	SN BREAKS		
JLG	642	Without Outriggers	•
	642	With Outriggers	•
	943/1043	Without Outriggers	•
	943/1043	With Outriggers	•
	1055	Prior To 0160074169	•
	1055	0160074169 - Present	•
	1255	Prior To 0160074168	•
	1255	0160074168 - Present	•
SKYTRAK T4F	6036	0160069720 - 0160075649, incl 0160065792, 0160065798, 0160065824, 0160069383, 0160069411, 0160075653 & 0160075722	•
		0160075650 - Present, excl 0160075653 & 0160075722	•
	6042	0160069720 - 0160075656, incl 0160065792, 0160065798, 0160065824, 0160069383 & 0160069411	•
		0160075657 - Present	•
	8042	0160069722 - 0160075670, incl 0160065791, 0160065796, 0160065825, 0160065826, 0160069336, 0160069359 & 0160069441	•
		0160075671 - Present	•
	10042	0160069722 - 0160075987, incl 0160065791, 0160065796, 0160065825, 0160065826, 0160069336, 0160069359 & 0160069441	•
		0160075988 - Present	•
	10054	0160069722 - 0160075682, incl 0160065791, 0160065796, 0160065825, 0160065826, 0160069336, 0160069359, 0160069441 & 0160075696	•
		0160075683 - Present, excl 0160075696	•

Use Appropriate Carriage Attachment Load Chart

NOTES:

- Use only JLG approved attachments with proper material handler model/attachment load capacity charts displayed in the operator's cab.
 - Never use your attachment as a work platform or personnel carrier.
- Can't find the attachment you are looking for? Contact your JLG Aftermarket Parts representative at 1-877-JLG-LIFT or visit www.jlg.com.

ATTACHMENTS

Non-Current Production - Fork Mounted Bucket Available Through JLG Aftermarket Parts

BUCKET WIDTH		60"	
CAPACITY		2000 lbs.	
APPROX. WEIGHT		705 lbs.	
PART NO.		1001195970	
MODEL	SN BREAKS		
JLG	G6-42A	0160037722 - 0160040659	•
		0160040678 - Present	•
	G9-43A	0160037671 - 0160040674, excl 0160040468 & 0160040672	•
		0160040675 - Present, incl 0160040468 & 0160040672	•
	G10-43A	0160037671 - 0160040674, excl 0160040468 & 0160040672	•
		0160040675 - Present, incl 0160040468 & 0160040672	•
	G10-55A	0160037690 - Present, incl 0160038505, 0160038507, 0160038324, 0160038489 & 0160038493	•
	G12-55A	0160037689 - Present	•

Use Appropriate Carriage Attachment Load Chart

NOTES:

- Use only JLG approved attachments with proper material handler model/attachment load capacity charts displayed in the operator's cab.
 - Never use your attachment as a work platform or personnel carrier.
- Can't find the attachment you are looking for? Contact your JLG Aftermarket Parts representative at 1-877-JLG-LIFT or visit www.jlg.com.