

Performance

Rated Capacity	2,700 lb	1,225 kg
Maximum Lift Height	13 ft 1 in.	4 m
Load at Max Height	1,555 lb	705 kg
Maximum Forward Reach	7 ft 1 in.	2.2 m
Load at Max Reach	1,200 lb	544 kg
Lift Speed (boom retracted)		
Up	10.9 sec	
Down	7.7 sec	
Boom Speed		
Extended	7.5 sec	
Retracted	4.5 sec	
Top Travel Speed	10.5 mph	17 kph
Drawbar Pull (loaded)	2,623 lb	11.7 kN
Outside Turning Radius	117 in.	3 m
Operating Weight	5,280 lb	2,400 kg

Standard Specifications

Engine

Make and Model	Kubota V-1505	
No. of Cylinders	4	
Displacement	91.2 cu in.	1.5 L
Gross Power Basic	24.8 hp	18.5 kW
Maximum Torque	68.3 lb-ft	92.6 Nm
Fuel Tank Capacity	14.5 gal	55 L

Transmission

Hydrostatic
1-speed forward and 1-speed reverse.

Axles

Limited Slip
Rear Oscillating
Four Wheel Drive

Brakes

Emergency brake spring applied and hydraulically released.
Service brake with inching.

Tires

Standard	11.0/65 x 12 Pneumatic Ag Tread Tires
Optional	Foam-Filled Ag Tread Tires, Pneumatic Non-marking Tires, Foam-Filled Non-marking Tires, Turf Tires

Cab

Certified ROPS/FOPS structure	Single joystick controls
Adjustable suspension seat with retractable seat belt	Integrated arm rest
Rear view mirrors	Longitudinal Stability Indication System

Steering 2-Wheel

Rear Pivot Power Steering

Instruments

• Hourmeter	• Pre-heating indicator
• Engine oil pressure indicator	• Battery indicator
• Temperature indicator	• Air filter indicator
• Fuel gauge	



Hydraulic System-Implement

Capacity	8.5 gal	32 L
Gear Pump		
Holding valves.		

Auxiliary hydraulics used for all attachments equipped with cylinders or other hydraulic components. Consists of valves, controls and hydraulic lines.

Accessories & Options

- Enclosed Cab
- Work Lights
- Wiper Package
- Front Brick Guard
- 2 in. Ball Hitch
- Cold Weather Package

Attachments

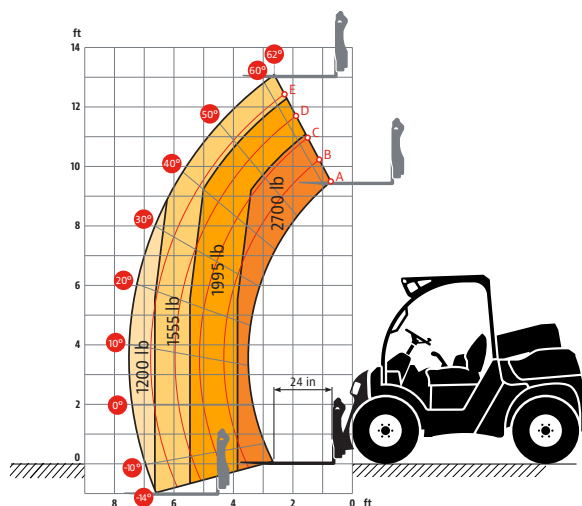
Standard Carriage	41 in.	1.0 m
Universal Carriage	41 in.	1.0 m
Pallet Forks	48 in.	1.2 m
General Purpose Bucket (Universal or JLG Coupler)	55 in.	1.4 m

Dimensions

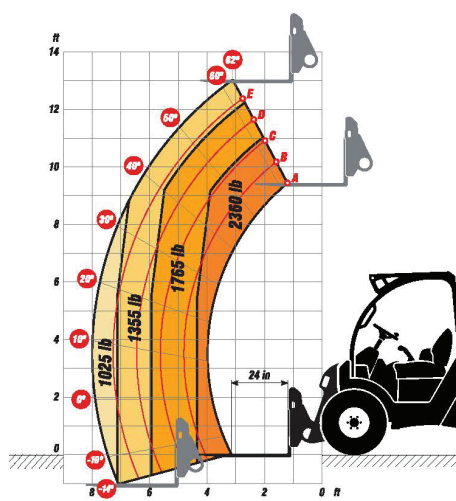
All dimensions are approximate.



Load Chart



Universal Skid Steer Coupler



The JLG "1, 2 & 5" Warranty

We provide coverage for one (1) full year on the entire machine, two (2) full years or 2,000 hours on the drivetrain and cover all specified major structural components for five (5) years. Due to continuous product improvements, we reserve the right to make specification and/or equipment changes without prior notification.

Part No.: 3132253
R112002
Printed in USA



JLG Industries, Inc.
1 JLG Drive
McConnellsburg, PA 17233-9533
Telephone 717-485-5161
Toll-free in US 877-JLG-LIFT
Fax 717-485-6417
www.jlg.com

An Oshkosh Corporation Company